

N1MM Logging Software Installation

Go to N1MM.com, Downloads tab, **Download Program**.

Download the *N1MM Logger Base Install*, **Download N1MM-FullInstaller.exe**.

Download the Latest Version.

The latest version as of 6/16/2009 is **Version 9.6.1**.

Install the Full Installer package by executing **N1MM-FullInstaller.exe**.

1. Hit **RUN** at the Security Warning.
2. Approve the Disclaimer by clicking **NEXT**.
3. Make sure all Components are selected, and click **NEXT**.
4. Choose the destination folder (the default is fine), and click **INSTALL**.
5. Click on Done.
6. You may get a screen for **TDLPortIO: DriverLINX driver install**. If you do, click on the **INSTALL** button, then **EXIT**. **Reboot** your computer.

DO NOT try to use (run) the software yet, there is an update to install.

Install the Latest Update package by executing the file. The file looks something like this:

N1MM-newexeV9.6.1.exe.

1. Hit **RUN** at the Security Warning.
2. Approve the Disclaimer by clicking **NEXT**.
3. Use the **SAME** destination folder as the Logger Base Install (if you used the default there, use the default here also), and click **INSTALL**.
4. Click on Done.

NOTE: To use MULTI-USER mode, **ALL** networked computers need to utilize the **SAME** version of N1MM software.

NOTE for WINDOWS VISTA installers: right click on N1MM Logger shortcut. Go to the Properties-Compatibility tab. Check the "XP compatibility" and "Run as Admin" buttons. Click on "Apply" and "OK".

Get the latest Country File by going to <http://www.country-files.com/cty/#N1MM>

Download the file **wl_cty.dat**. Save to your N1MM Logger directory.

Open N1MM Logging Software. Close the Edit Station Information window for now, you can set it up later. Go to **Tools -> Import Country List from downloaded file**. Select the **wl_cty.dat** file, and click on **OPEN**. This includes the current country list.

NOW you can go to **Config -> Change Your Station Data**. Enter as much information as you know.

Specific Instructions for **CATALINA RADIO CLUB FIELD DAY SETUP** are on the next few pages.

CATALINA RADIO CLUB FIELD DAY SETUP

Since the Station Information is for the Field Day Station, go to **Config -> Change Your Station Data** and set it up as shown below.

NOTE: GOTA station information is the same **EXCEPT** the Call is **N7FG**.

Edit Station Information

Tip: You need to fill out this form or the program will not perform properly... Also, make sure your computer date and time are set to the LOCAL date and time zone for your location.

Call: W7SA

Name: Catalina Radio Club

Address: M/S 842-12

Address: PO Box 11337

City: Tucson State: AZ Zip: 85734-1337

Country: USA

Grid Square: DM42PK CQ Zone: 3 ITU Zone: 6

License Class: Extra Latitude: 32.41722 Longitude: 110.735

Station TX/RX: Multiple Power: 150 max

Antenna: Multiple Ant. height o.g. a.s.l.

ARRL Section: AZ Packet Node Call

Club: Catalina Radio Club

email address: w7sa.crc@gmail.com

SMTP Server addr: x.x

Ok Help Cancel

As the screen indicates, ensure your computer date/time are set to LOCAL date and time.

Create a new database called **fd2009**. Go to **File -> New Database**. Enter the filename **fd2009.MDB**. **Save**.

Open this database. Go to **File -> Open Database**. Select the filename you just created, **fd2009.MDB**. **Open**. You will get a Log Selection window. Just close the window by selecting **CANCEL** for now. We'll get to the Log Selection window after we Create a New Log.

Create a New Log in this database by going to **File -> New Log in Database ... fd2009.MDB**.

Fill out the New Log screen as follows:

The screenshot shows a dialog box titled "C:\Program Files\W1MM logger\fd2009.MDB". At the top, it says "Select Contest Type for New Log". Below this, there are two input fields: "Log Type" with a dropdown menu set to "FD", and "Start Date" with a text box containing "2009-06-27".

Below these fields are two tabs: "Contest" (which is selected) and "Associated Files". Under the "Contest" tab, there are several dropdown menus and text boxes:

- "Operator Category" dropdown set to "MULTI-MULTI".
- "Band Category" dropdown set to "ALL".
- "Power Category" dropdown set to "LOW".
- "Mode Category" dropdown set to "MIXED".
- "Overlay Category" dropdown set to "N/A".
- A text box for "State for Log Type QSOPARTY" is empty.
- A note: "Note - the program does not validate categories. Check the contest rules for valid categories."
- A button labeled "Show Rules (Internet access required)".
- "Sent Exchange" text box containing "4A AZ".
- "Operators" text box containing "KE7DX".
- "Soapbox Comments" text box, currently empty.

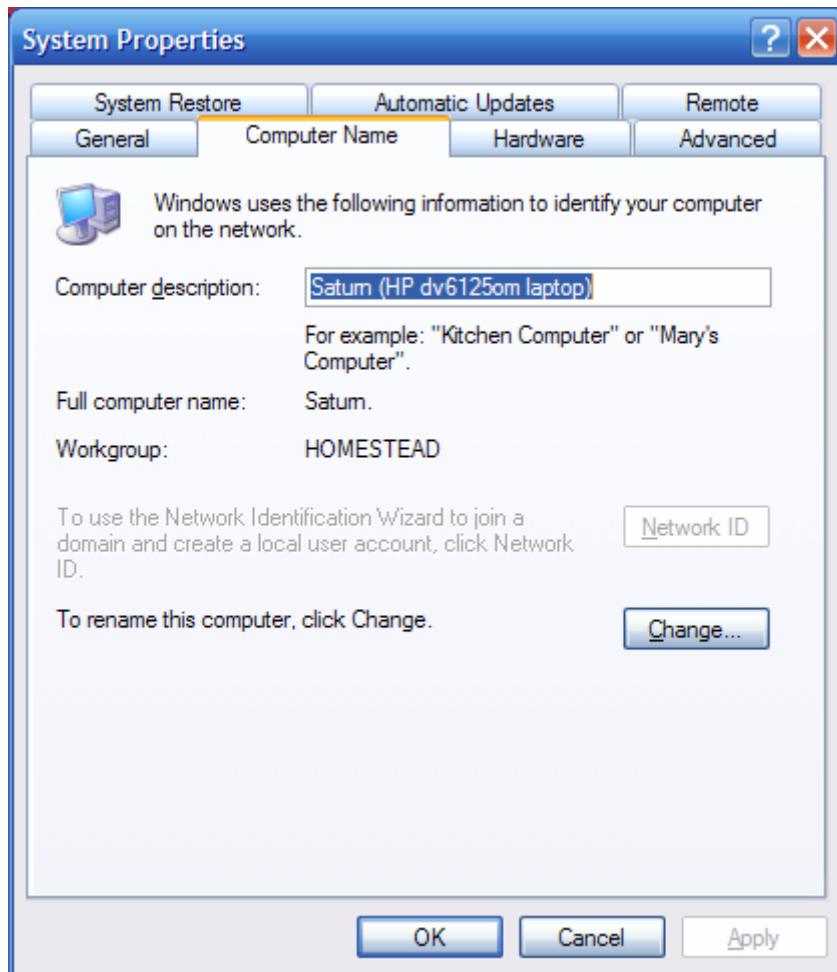
At the bottom right of the dialog box are three buttons: "OK", "Help", and "Cancel".

NOTE: Note the operators list. There will be instructions on how to **change operators** later, in the **USERS** instructions.

SETTING UP MULTI-USER MODE

Prior to enabling MULTI-USER mode, all computers must be networked together. The Computer Name of each computer must also be known.

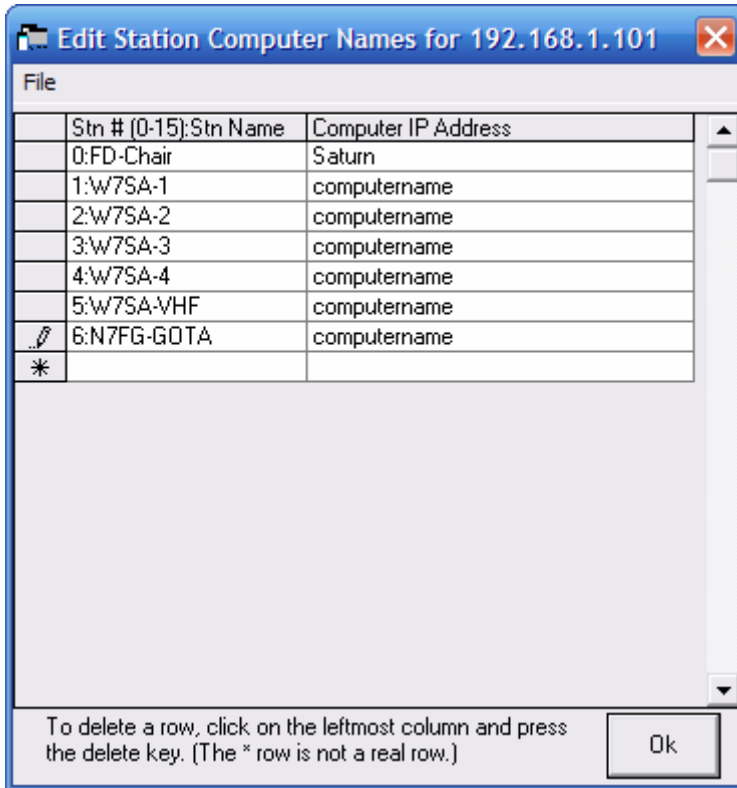
To determine the **Computer Name** from WinXP, go to **Start -> Control Panel -> System**. Go to the **Computer Name** tab. The **Computer Name** that you need is listed under **Full computer name**.



Computer Names need to be absolutely unique amongst all computers in the network. If you need to rename a computer, click the **Change** button, rename the computer, and **reboot** the computer so the changes take effect.

SHARE THIS COMPUTER NAME WITH ALL OTHER NETWORKED COMPUTER OPERATORS, AND GET THEIR INFORMATION. You will need it for the next step.

From the N1MM Logging Software Main Screen, go to **Config -> Edit Station Computer Names**. Note the network IP address of your computer is in the title bar. Fill out the **Stn #:Stn Name** and **Computer IP Address** as shown, substituting the actual computer names (or the other computers IP addresses) for the generic computername. Select **OK** when done.



Now, finally, you can enable MULTI-USER mode. Select **Config -> Multi-User Mode**. This allows you to enter open the **Config -> Multi-User Tools** menu.

When all stations have configured for Multi-User, you should be able to see all the stations status by opening the Info Window. Go to **Window -> Info** to open the Info window.

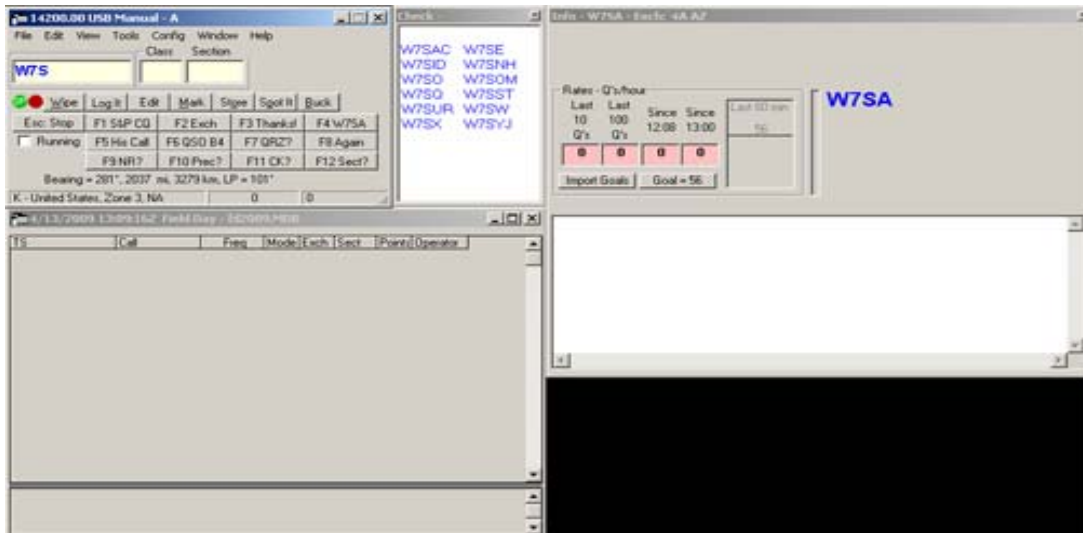
You may communicate with other stations during the contest by using the **Config -> Multi-User Tools -> Talk to another station**.

At the beginning of the contest, make sure computer times are sync'd by using the **Config -> Multi-User Tools -> Force Time Sync Now** function.

USERS GUIDE

Recommended window configuration:

- Entry Window
- Check Window
- Log Window
- Info Window

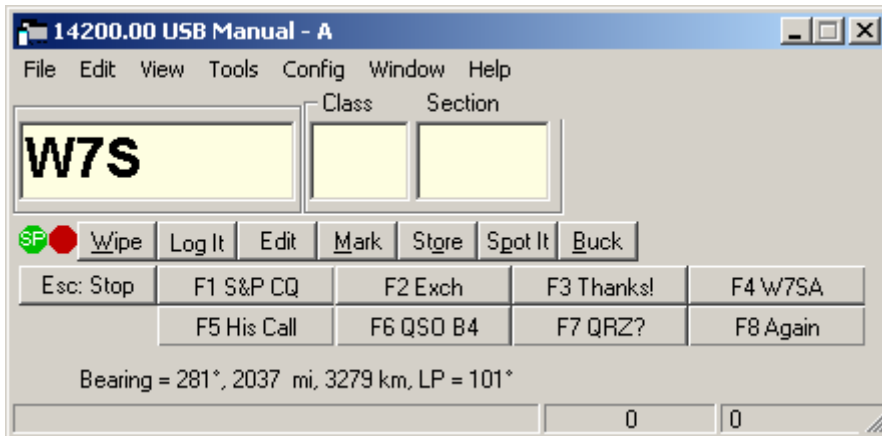


The entry window is open by default when you load the N1MM software. To open other windows, go to **Window** and select the window you wish to open.

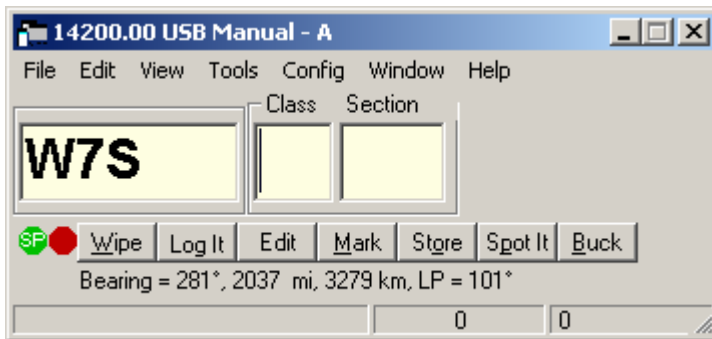
CHANGING OPERATORS

Go to **Config -> Change Operator**. Enter the operator **callsign** and select **OK**. Alternately, hit **CTRL-O** to bring up the change operator window.

ENTRY WINDOW



If you are operating manually (no CAT connection to the Radio), you do not need the lower buttons, which are used for automatically sending CW. In order to reduce confusion, I recommend you change the window size to hide those buttons.



If you need a larger font size for the entry windows, right click in the callsign area and select **Change Font**.

Title Bar

Note the title bar has the **frequency** and **mode**, and indicates it is being set manually. ***Check the title bar frequently to ensure the correct band and mode are represented.***

Changing the Frequency and Mode

To change bands manually, simply type in the frequency in the callsign window. If you are operating manually, use **3500, 7000, 14000, 21000, and 28000** for the bands 80m-10m.

To change the mode, simply type in the mode in the callsign window. Valid modes are **USB, LSB, CW, and RTTY**. Use RTTY for any digital mode.

The green and red indicators are used for CAT operation and are outside the scope of this users guide.

Button Assignments

Wipe: clears all information for the current contact. (**CTRL-W** is the shortcut key)

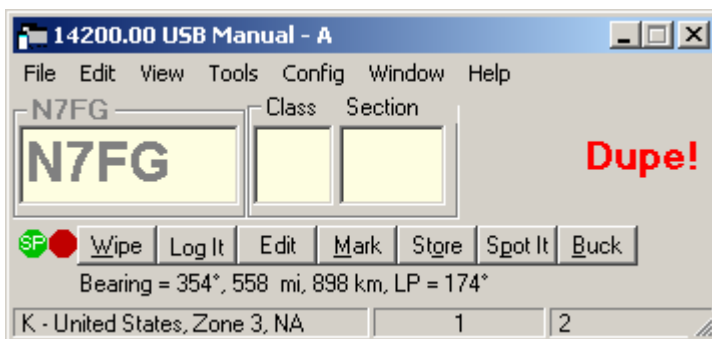
Log It: Write this contact into the log. (**ENTER** is the shortcut key)

Other buttons are outside the scope of this users guide.

Callsign/Exchange Editing Features

- **Space Bar** – moves cursor to the position the last position the cursor was in prior to leaving the Callsign or Exchange fields.
- **Tab** – Move to the next field.
- **Shift+Tab** – move to the previous field.
- **Enter (Return)** – writes this contact into the log.

DUPES



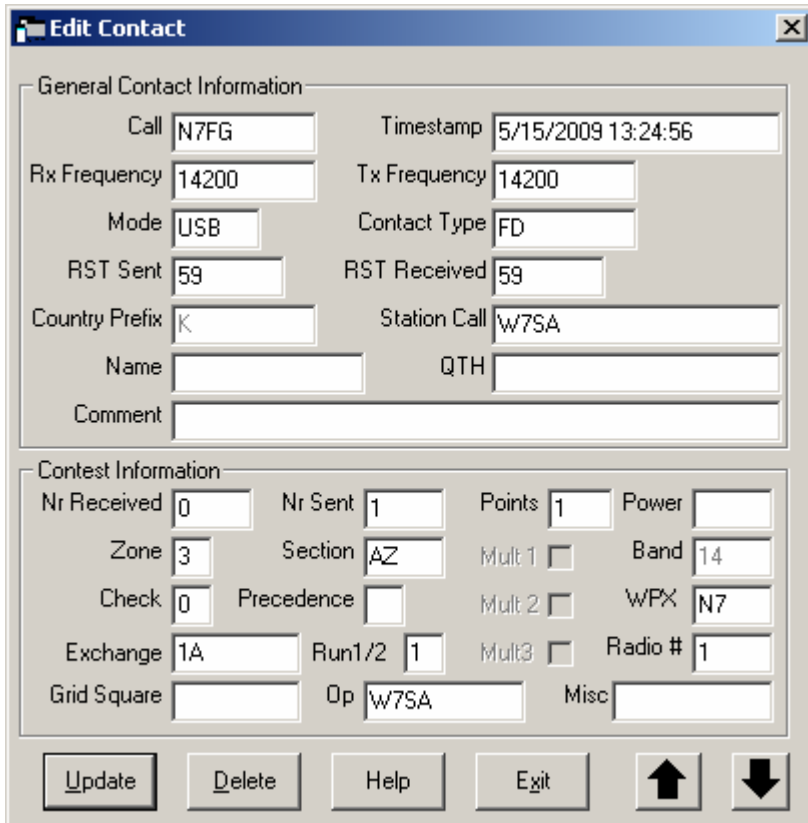
LOG IT!!!

Wait! Remember: **Check the title bar frequently to ensure the correct band and mode are represented.** A good time to do this is before you log the contact!

To log the information in the entry window, you can hit the **Log It** button, or press **ENTER (RETURN)**. Error checking is done, so if the Entry Window does not clear, check for error messages. If you are SURE you have a correct entry, but get an error message, you can FORCE logging by pressing **CTRL-ALT-ENTER**. If the log window is open, you should see the information move to the log.

WHOOPS, I MADE A MISTAKE!

To edit a contact that is already in the log, press **CTRL-Y** or go to **EDIT -> EDIT LAST CONTACT**. In the EDIT CONTACT Window, there are up/down arrows that allow you to edit **ANY** contact in the log. After you enter the correct information, press the **UPDATE** button to store the corrected data.



Edit Contact

General Contact Information

Call: N7FG Timestamp: 5/15/2009 13:24:56

Rx Frequency: 14200 Tx Frequency: 14200

Mode: USB Contact Type: FD

RST Sent: 59 RST Received: 59

Country Prefix: K Station Call: W7SA

Name: QTH: Comment:

Contest Information

Nr Received: 0 Nr Sent: 1 Points: 1 Power: Zone: 3 Section: AZ Mult:1: Band: 14

Check: 0 Precedence: Mult:2: WPX: N7

Exchange: 1A Run1/2: 1 Mult:3: Radio #: 1

Grid Square: Op: W7SA Misc: [Up Arrow] [Down Arrow]

[Update] [Delete] [Help] [Exit]

CHECK WINDOW

As you type in a callsign, the CHECK Window shows possibilities of the next character entry. Your entry is compared against the "Super Partial" Database of active callsigns. Once the full callsign is entered, the CHECK Window will tell you if you have entered a DUPE.

INFO WINDOW

This window gives you information on how you're progressing in the contest. It also shows the other stations on the network. It is important to make sure each station is connected, **if you see errors during Field Day please let us know!!!**

The screenshot shows a software window titled "Info - W7SA - Exch: 4A AZ". It displays contest statistics for station W7SA. The "Rates - Q's/hour" section shows a table with columns for "Last 10 Q's", "Last 100 Q's", "Since 12:38", and "Since 13:00". The values are 120, 120, 0, and 0 respectively. A "Last 60 min" box shows 56. Below this is an "Import Goals" button and a "Goal = 56" field. A table below lists stations: "Radio" (green icon) and "Laptop" (red icon). The "Radio" row shows "Pass: Not Set", "Run: [checkbox]", "Last 10: 120", "100: 120", "Current Freq: 0.00 SB", and "Op/Message: W7SA". The "Laptop" row shows "13:38:38 - Laptop () connection failed." Below the table is a large empty text area.

Station	Pass	Run	Last 10	100	Current Freq	Op/Message
Radio	Not Set	<input type="checkbox"/>	120	120	0.00 SB	W7SA
Laptop						13:38:38 - Laptop () connection failed.

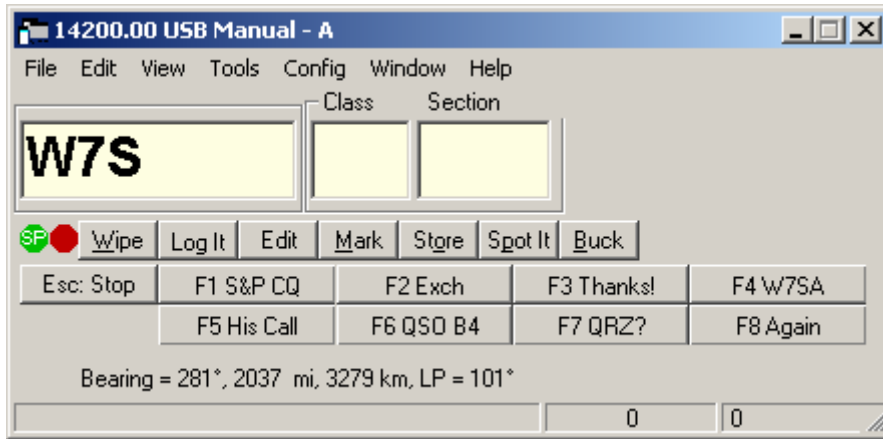
SEND A MESSAGE TO ANOTHER STATION

While in Multi-User Mode (as we will be during Field Day), you can send a message to another station by using the Entry Window taskbar and going to **CONFIG -> MULTI-USER TOOLS -> TALK TO ANOTHER STATION**. Note you can also get this window by pressing **CTRL-E**.

What else???

N1MM ONE PAGE REFERENCE

ENTRY WINDOW



Change Frequency	Type in freq in kHz	<ENTER>
Change Mode	Type in USB, LSB, CW , etc.	<ENTER>
Change User	CTRL-O	Config -> Change Operator
Change Font	Right Click in Callsign window	Change Font
Move Cursor to next Field	Tab	
Move Cursor to previous Field	Shift+Tab	
Move Cursor to Exchange	Space Bar	
Log It	<ENTER>	Log It Button
Force Logging	CTRL-ALT-ENTER	
Clear Contact Info	CTRL-W	Wipe Button
Edit Contact after Logging	CTRL-Y	EDIT -> EDIT LAST CONTACT
Send Message	CTRL-E	CONFIG -> MULTI-USER TOOLS -> TALK TO ANOTHER STATION

CHECK WINDOW

Checks for valid callsigns in the Super Partial database.

INFO WINDOW

Shows networked multi-user status. Also has some details on contest progress.